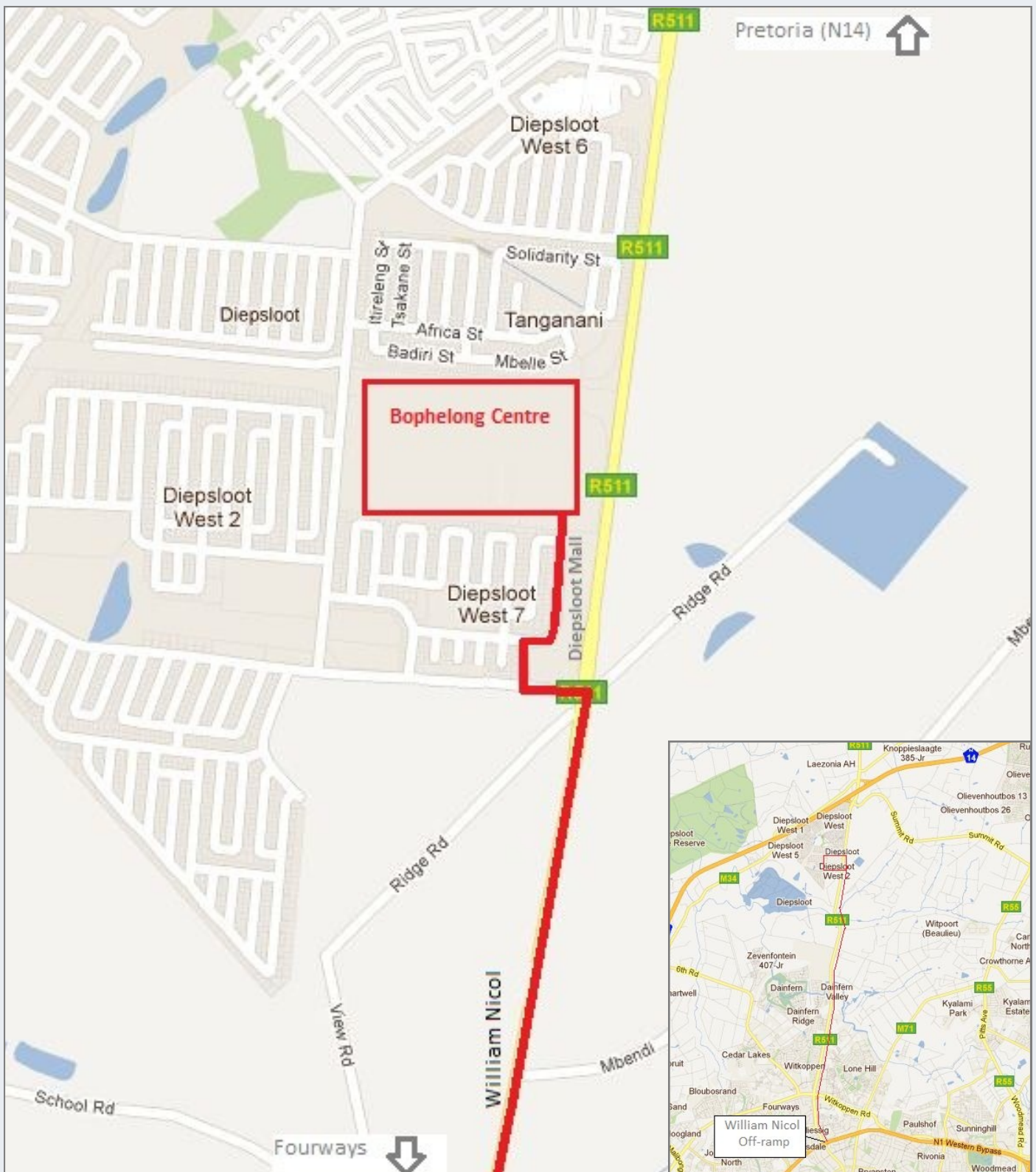


DIRECTIONS FROM JOHANNESBURG—SIYAKHULA COMPUTER SCHOOL DIEPSLOOT



Directions From N3 or Sandton:

Take William Nicol towards Fourways. Travel approx. 11km from William Nicol/N1 Off-Ramp.

Turn LEFT directly before DIEPSLOOT MALL.

After 140m take first RIGHT into MAKHUDUTHAMAGA.

At T-junction (after 110m) turn RIGHT into RODNEY MPHELA and follow road into BOPHELONG CENTRE.

Siyakhula Computer School is located in the Zikhuleseni Building Complex.

Contact: Andrew Barrett. Cell: 082 903 5979. Tel: 011 042 9898. Email: andrew@wearegrowing.org